



LETTER OF TRANSMITTAL

March 5th, 2015

Dr. Michael Klemens
230 Housatonic River Road
Falls Village, CT 06031
VIA EMAIL AND MAIL

RE: Change #4: Landscape Plan Updates by South Entrance

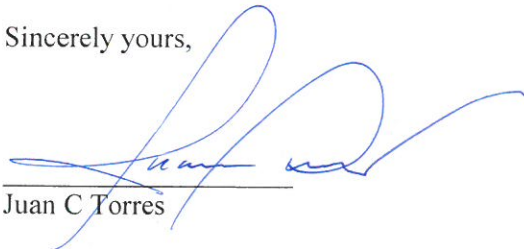
Dear Dr. Klemens,

During our Wednesday March 4th, 2015 meeting, Silo Ridge and Dr. Klemens discovered a small area outside the Harlem Valley Landfill Corp (“HVL”) easement by the south entrance on Route 22 that proposed landscaping. To be consistent with the HVL easement, the landscape planting outside the easement area by the south entrance has been removed. Sheet L1.14 (Materials Plan Enlargements), Sheet 3.10 (Planting Plan Tile 10), Sheet L3.14 (Planting Plan Enlargement) and Sheets L3.21 and L3.22 (Planting Schedule) have been updated to reflect the changes.

Therefore, as per our discussion during this meeting, enclosed please find Change #4, which has been reviewed and accepted by Dr. Klemens. Unless there are any other necessary changes, the Applicant will mark Change #4 **“Final.”** As this time, the MDP and Site Plan Drawings will not be reissued, however, future submissions will reflect this change.

Please feel free to contact us should you have any comments or questions.

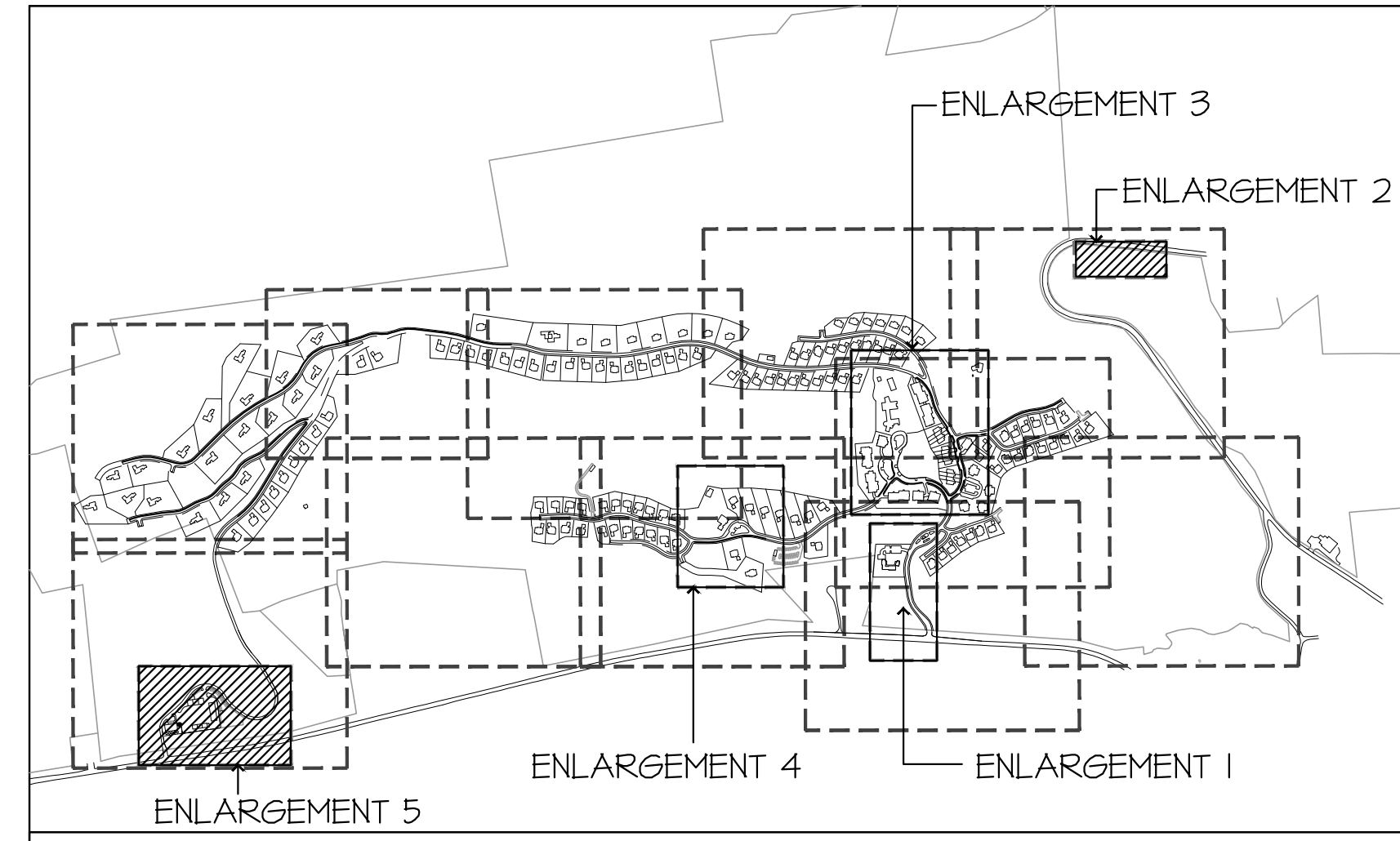
Sincerely yours,



Juan C Torres

CC: Mike Dignacco
Pedro Torres
Peter J. Wise, Esq.
George M. Janes, AICP
Julie Mangarillo
Mary Ann Johnson
David R. Everett
Chairman – Norm Fontaine

KEY PLAN



GENERAL NOTES:
 1. ALL GOLF LANDSCAPE SHOWN FOR ILLUSTRATIVE PURPOSES ONLY. REFER TO CIVIL ENGINEER AND GOLF COURSE ARCHITECT'S PLANS FOR LAYOUT AND DESIGN.
 2. DRAWINGS ARE FOR DESIGN INTENT ONLY.
 3. STRUCTURAL DESIGN OF ALL WALLS/ STAIRS AND OTHER HARDSCAPE ELEMENTS IS THE RESPONSIBILITY OF THE STRUCTURAL ENGINEER AND CIVIL ENGINEER.
 4. COORDINATE WITH LIGHTING CONSULTANT PRIOR TO BEGINNING ANY WORK.
 5. IRRIGATION PLANS SHALL BE PROVIDED BY CLIENT.
 6. SEE CIVIL ENGINEER'S DRAWINGS FOR ROAD, PARKING, AND TRAFFIC DESIGN.
 7. SEE TYPICAL RESIDENTIAL LOT ENLARGEMENT PLANS FOR PLANTING DESIGN INTENT WITHIN RESIDENTIAL DEVELOPMENT AREAS.

GRADING AND DRAINAGE DISCLAIMER:
 GRADING AND DRAINAGE INFORMATION SHOWN IS FOR REFERENCE ONLY. SEE CIVIL DRAWING FOR COMPLETE DRAINAGE AND GRADING PLANS, WALL HEIGHTS, FINISH GRADES AND DRAIN LOCATIONS.

LEGEND

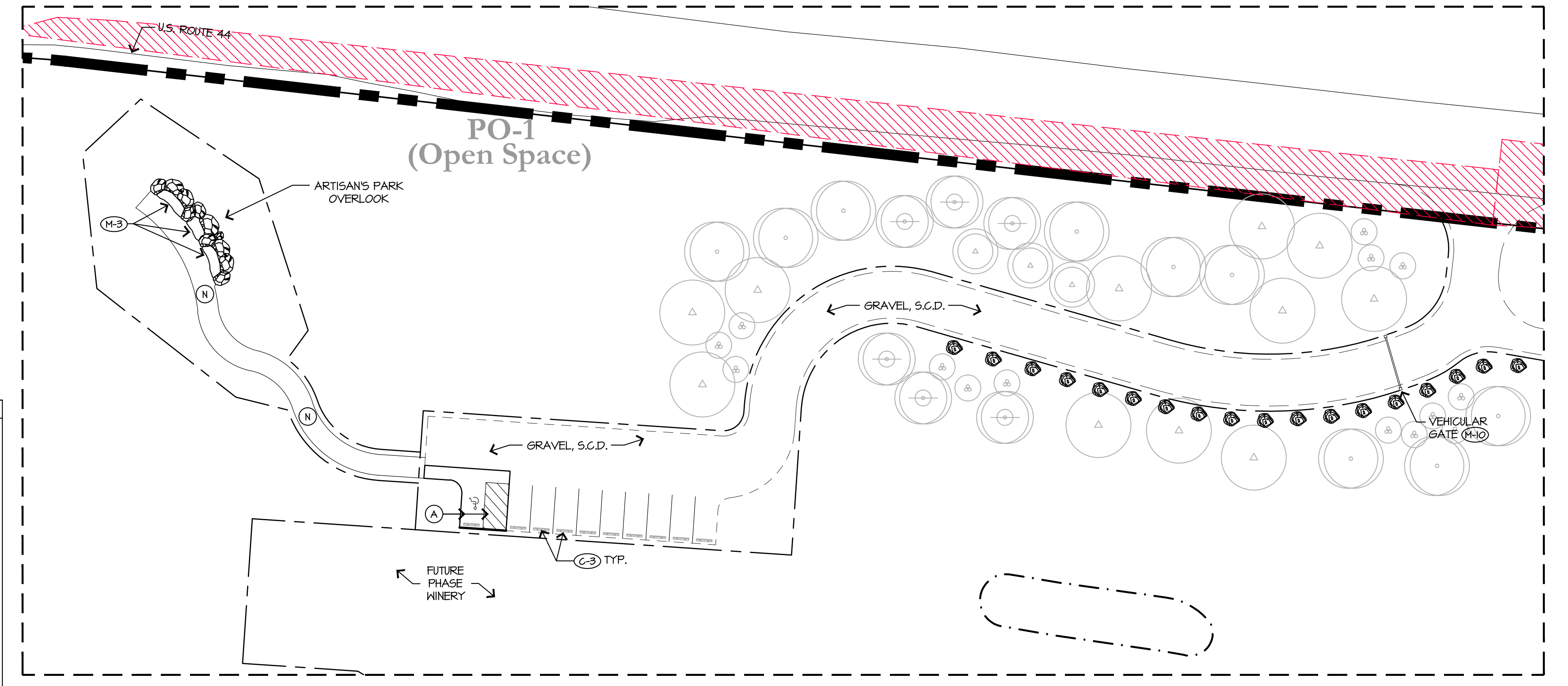
PROPERTY LINE
 PARCEL LINE
 SETBACK LINE
 ROAD RIGHT-OF-WAY
 EXISTING TREE LINE (LOCATION IS APPROXIMATE - TO BE VERIFIED IN FIELD)

MATERIALS SCHEDULE SYMBOL (TYP.)

ABBREVIATIONS:
 GFFE = GARAGE FINISHED FLOOR ELEVATION
 LFFE = LIVING FINISHED FLOOR ELEVATION
 WFFE = WALK-OUT FINISHED FLOOR ELEVATION
 N.I.C. = NOT IN CONTRACT
 NYDEC = NEW YORK DEPARTMENT OF ENVIRONMENTAL CONSERVATION
 NYS = NEW YORK STATE
 S.A.D. = SEE ARCHITECTURAL DRAWINGS

S.C.D. = SEE CIVIL ENGINEER'S DRAWINGS
 S.W.M. = STORM WATER MANAGEMENT
 TYP. = TYPICAL
 P.A. = PLANTING AREA
 V.I.F. = VERIFY IN FIELD

ARTISAN'S PARK OVERLOOK ENLARGEMENT



MAINTENANCE FACILITY ENLARGEMENT



UPDATE

NOT FOR CONSTRUCTION
 SILO RIDGE
 PHASE 1 SITE PLAN SUBMISSION
 Ardenia, New York
 Dutchess County

HART HOWERTON
 10 Erie Ave. Suite 200, Newburgh, NY 12550
 TEL: 212.682.5431 FAX: 212.681.1748
 E-mail: NY@hart-howerton.com

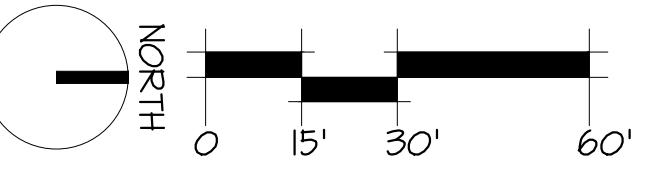
DATE ISSUED
 03/09/2014
 03/12/2014
 06/19/2014
 01/08/2015

REVISIONS

NO.	DATE	ISSUE
1	03/09/2014	DATE ISSUED
2	03/12/2014	REVISION #1
3	06/19/2014	REVISION #1
4	01/08/2015	REVISION #1

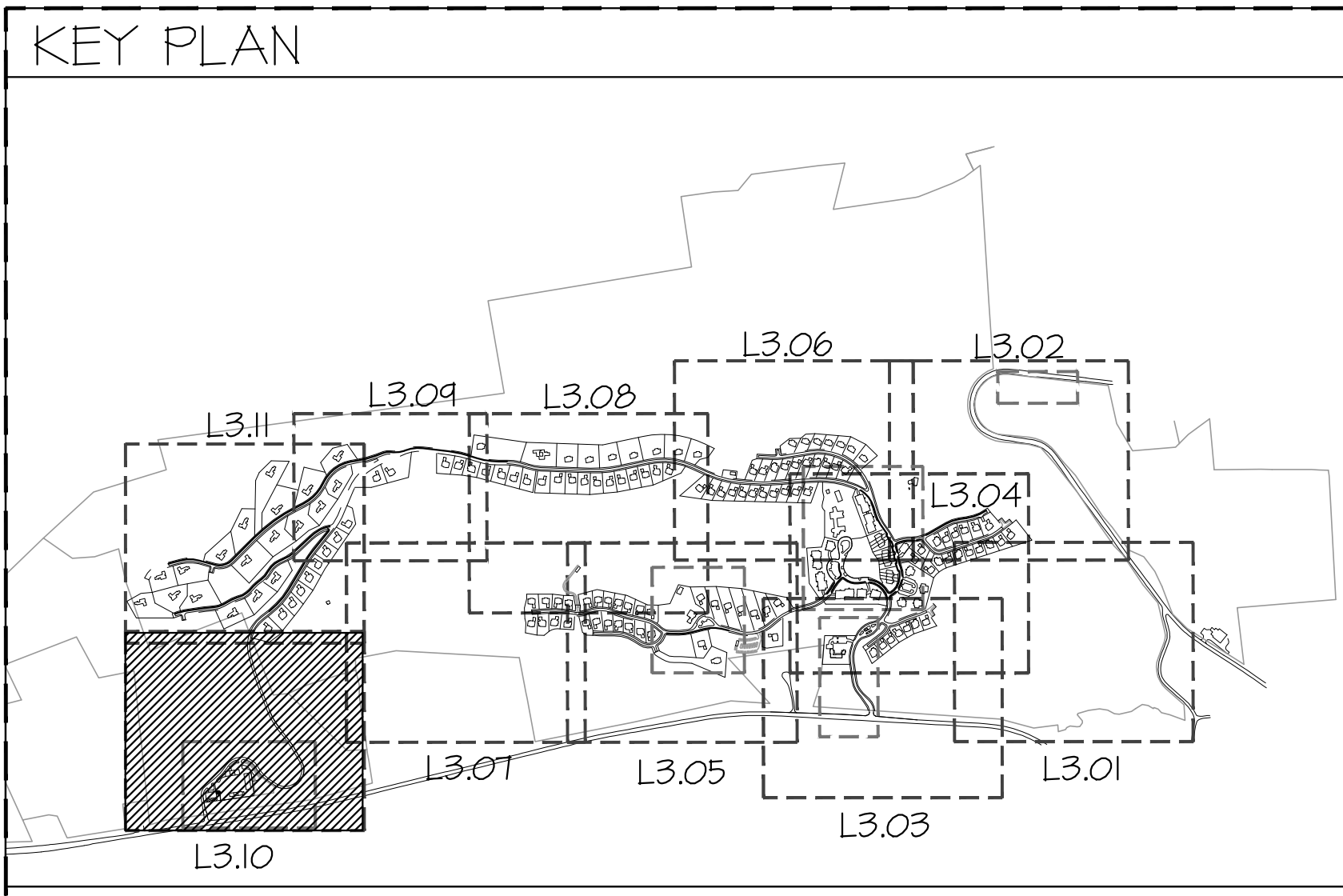
MATERIALS PLAN
 ENLARGEMENTS

PROJECT #:
 13-507
 DRAWN BY:
 JIN
 CHECKED BY:
 SIB
 DRAWING NO.:
L1.14



Jonathan Sotter, 10/2012/12-2017, Ardenia Inn and Cottages LLC CAD (Sheetfile) Sheet S01.L1.14 Material: Plotting... Page: Setup: tss, H:\Ardenia\Plotting... Page: Setup: tss, H:\Ardenia\Plotting...

MATCHLINE-SEE SHEET L3.11



GENERAL NOTES:

- ALL GOLF LANDSCAPE SHOWN FOR ILLUSTRATIVE PURPOSES ONLY. REFER TO CIVIL ENGINEER AND GOLF COURSE ARCHITECT'S PLANS FOR LAYOUT AND DESIGN.
- DRAWINGS ARE FOR DESIGN INTENT ONLY.
- STRUCTURAL DESIGN OF ALL WALLS/ STAIRS AND OTHER HARDSCAPE ELEMENTS IS THE RESPONSIBILITY OF THE STRUCTURAL ENGINEER AND CIVIL ENGINEER.
- COORDINATE WITH LIGHTING CONSULTANT PRIOR TO BEGINNING ANY WORK.
- IRRIGATION PLANS SHALL BE PROVIDED BY CLIENT.
- SEE CIVIL ENGINEER'S DRAWINGS FOR ROAD, PARKING, AND TRAFFIC DESIGN.
- SEE TYPICAL RESIDENTIAL LOT ENLARGEMENT PLANS FOR PLANTING DESIGN INTENT WITHIN RESIDENTIAL DEVELOPMENT AREAS.

GRADING AND DRAINAGE DISCLAIMER:

GRADING AND DRAINAGE INFORMATION SHOWN IS FOR REFERENCE ONLY. SEE CIVIL DRAWING FOR COMPLETE DRAINAGE AND GRADING PLANS, HALL HEIGHTS, FINISH GRADES AND DRAIN LOCATIONS.

LEGEND

---	PROPERTY LINE	RVZ	RIDGE LINE VISUAL PROTECTIVE ZONE
---	PARCEL LINE	RVC	ROAD VISUAL PROTECTION CORRIDOR
---	SETBACK LINE	TVC	TRAIL VISUAL PROTECTION ZONE
---	ROAD RIGHT-OF-WAY		
-S-C-	STREAM CORRIDOR		

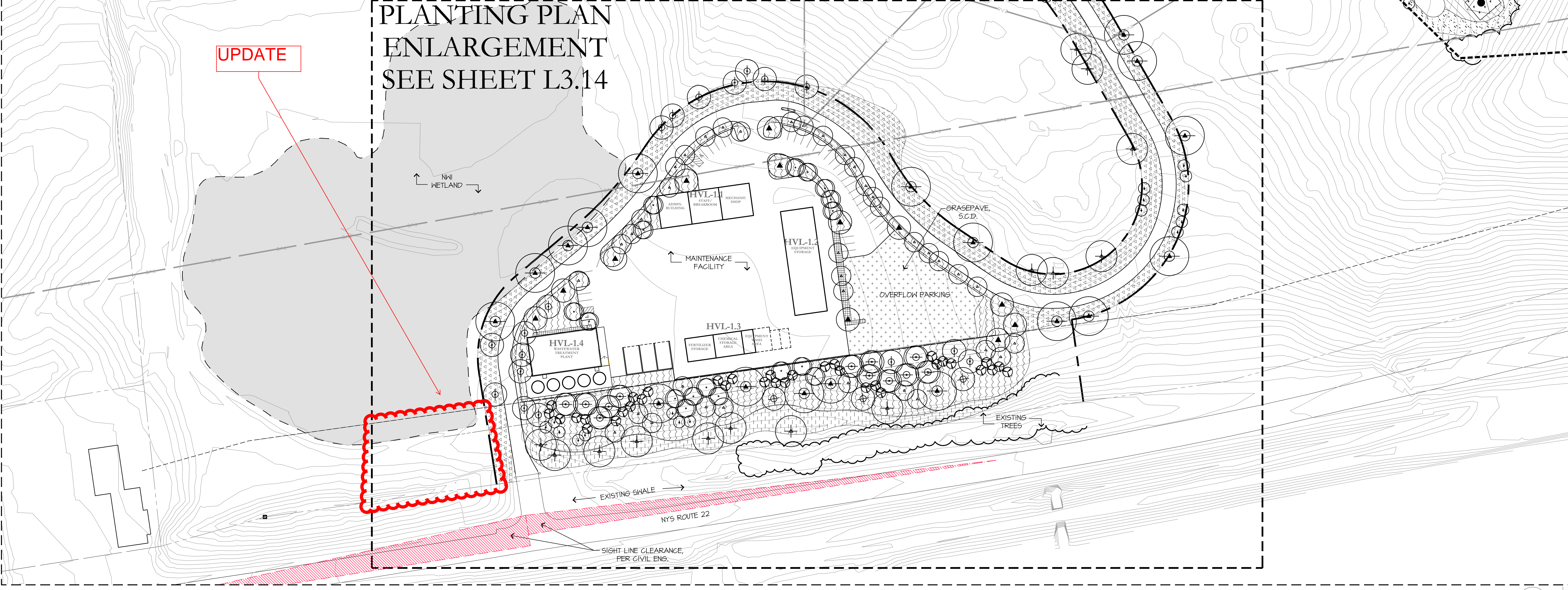
EXISTING TREE LINE (LOCATION IS APPROXIMATE - TO BE VERIFIED IN FIELD)
PROPOSED TREE SYMBOLS + PLANT MIXES (HATCHES) - SEE PLANTING SCHEDULE

ABBREVIATIONS:

GF.FE = GARAGE FINISHED FLOOR ELEVATION	S.A.D. = SEE ARCHITECTURAL DRAWINGS
LF.FE = LIVING FINISHED FLOOR ELEVATION	S.C.D. = SEE CIVIL ENGINEER'S DRAWINGS
W.F.E. = WALK-OUT FINISHED FLOOR ELEVATION	S.W.M. = STORM WATER MANAGEMENT
N.I.C. = NOT IN CONTRACT	TYP. = TYPICAL
NYDEC = NEW YORK DEPARTMENT OF ENVIRONMENTAL CONSERVATION	P.A. = PLANTING AREA
NYS = NEW YORK STATE	V.I.F. = VERIFY IN FIELD

PLANTING PLAN ENLARGEMENT SEE SHEET L3.14

UPDATE



MATCHLINE-SEE SHEET L3.07

NOT FOR CONSTRUCTION

SILLO RIDGE
PHASE 1 SITE PLAN SUBMISSION

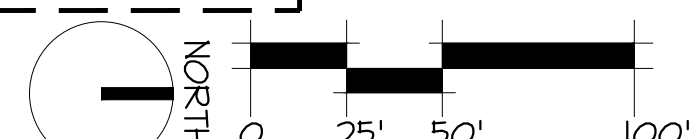
Amenia, New York
Dutchess County

PROJECT #:
13-307
DRAWN BY:
JIS
CHECKED BY:
SIB
DRAWING NO:
L3.10

HART HOWERTON
10 Erie Ave. Suite 200, York, NY 14086
TEL: 716.663.5431 FAX: 716.241.7548
Email: NY@hart-howerton.com

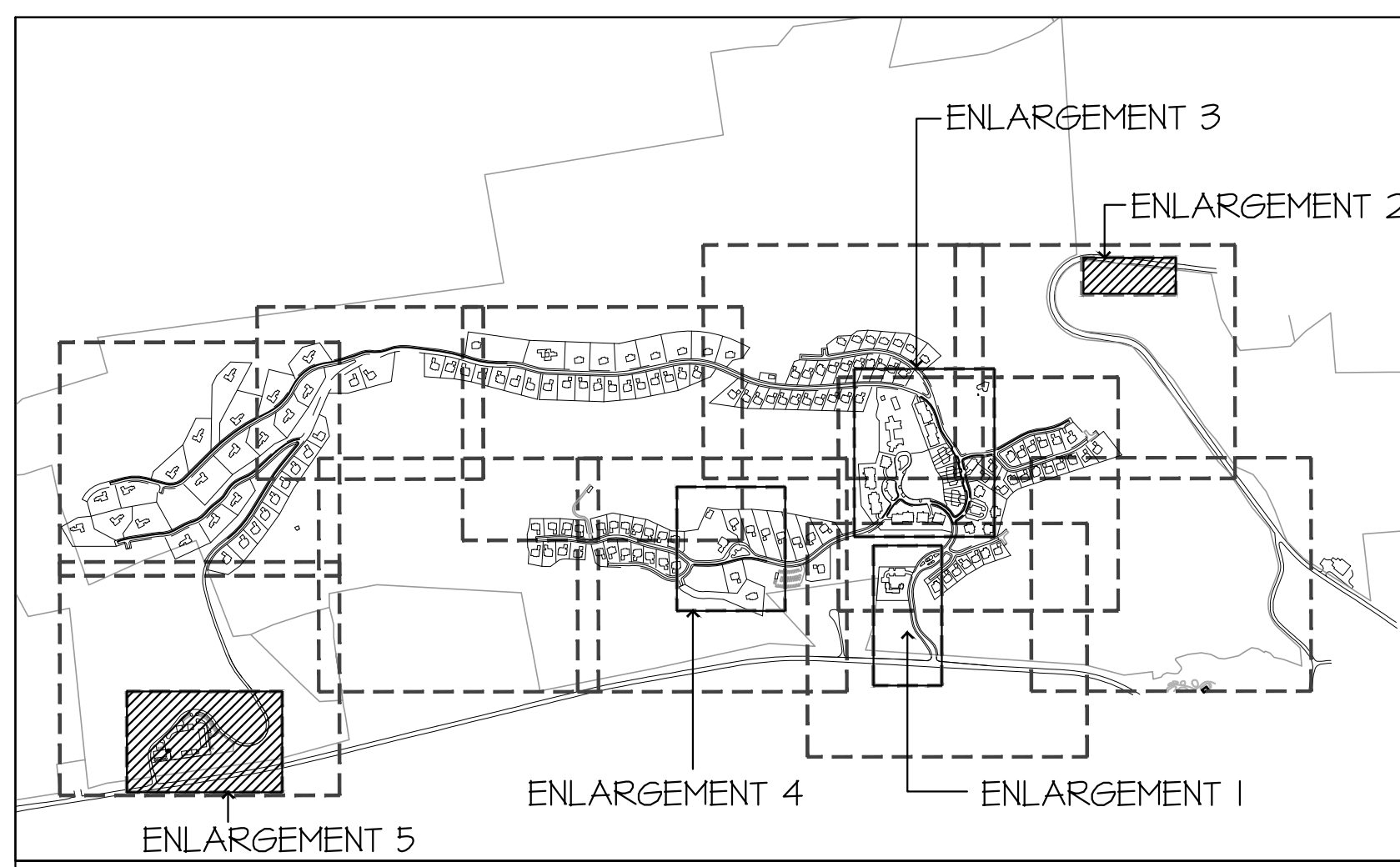
REVISIONS

NO.	DATE	ISSUE
01	08/2013	DATE ISSUE
02	03/2014	03/2014 DATE ISSUE
03	02/2014	02/2014 SITE PLAN REV
04	01/2014	01/2014 SITE PLAN REV
05	01/2013	01/2013 SITE PLAN REV



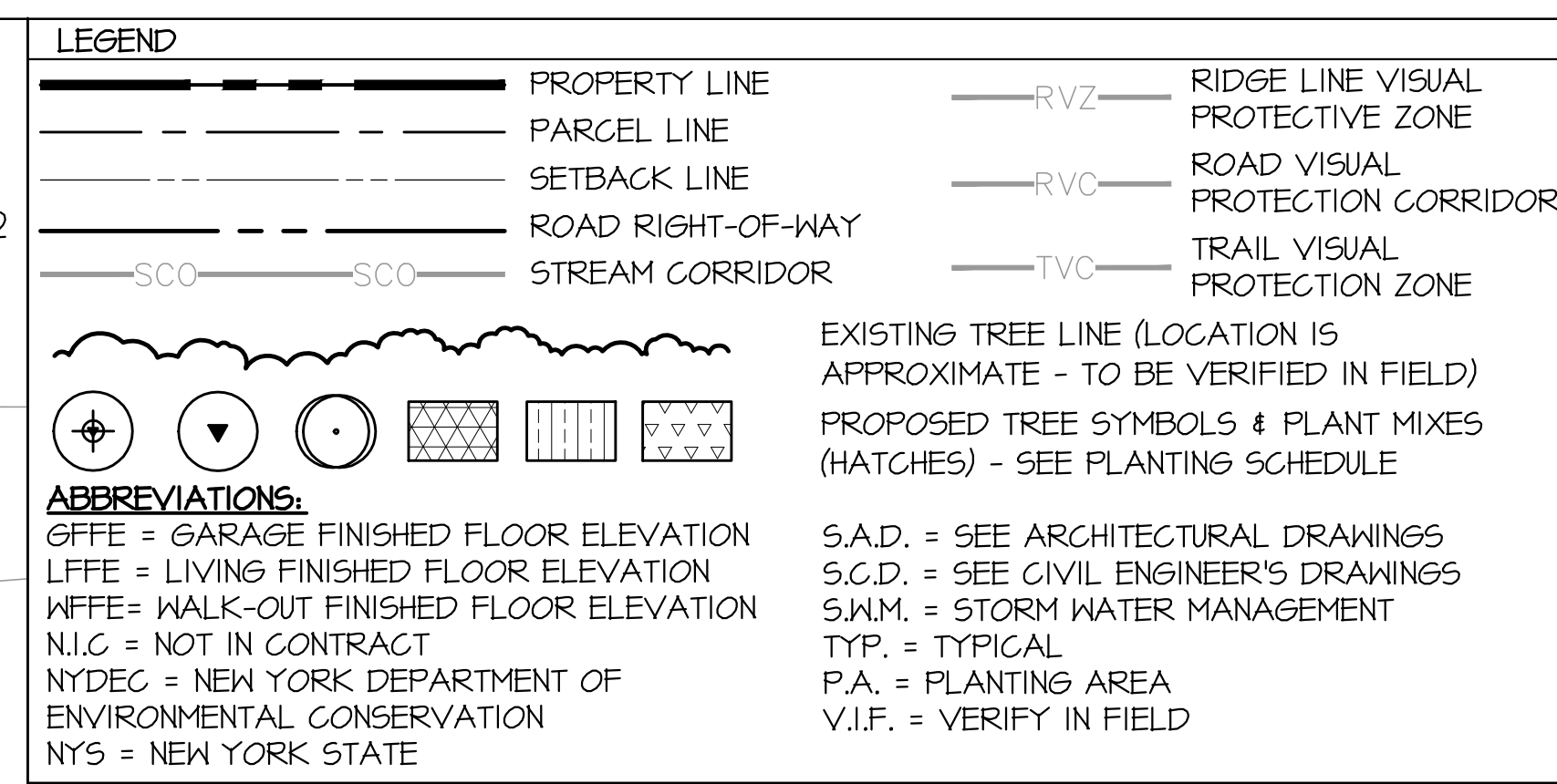
Jonathan Sokolic, EIT 2012-2017, Project Lead and Designer 6/0/CAD (Shredline) Sheet SCL3.10 PLANTING PLAN ENLARGEMENT, Project: Sillo Ridge, Title: L3.10 PLANTING PLAN ENLARGEMENT, Scale: 1:1, File Path: S:\1111\PRINT\Custom 4230013001.PCL\$

KEY PLAN

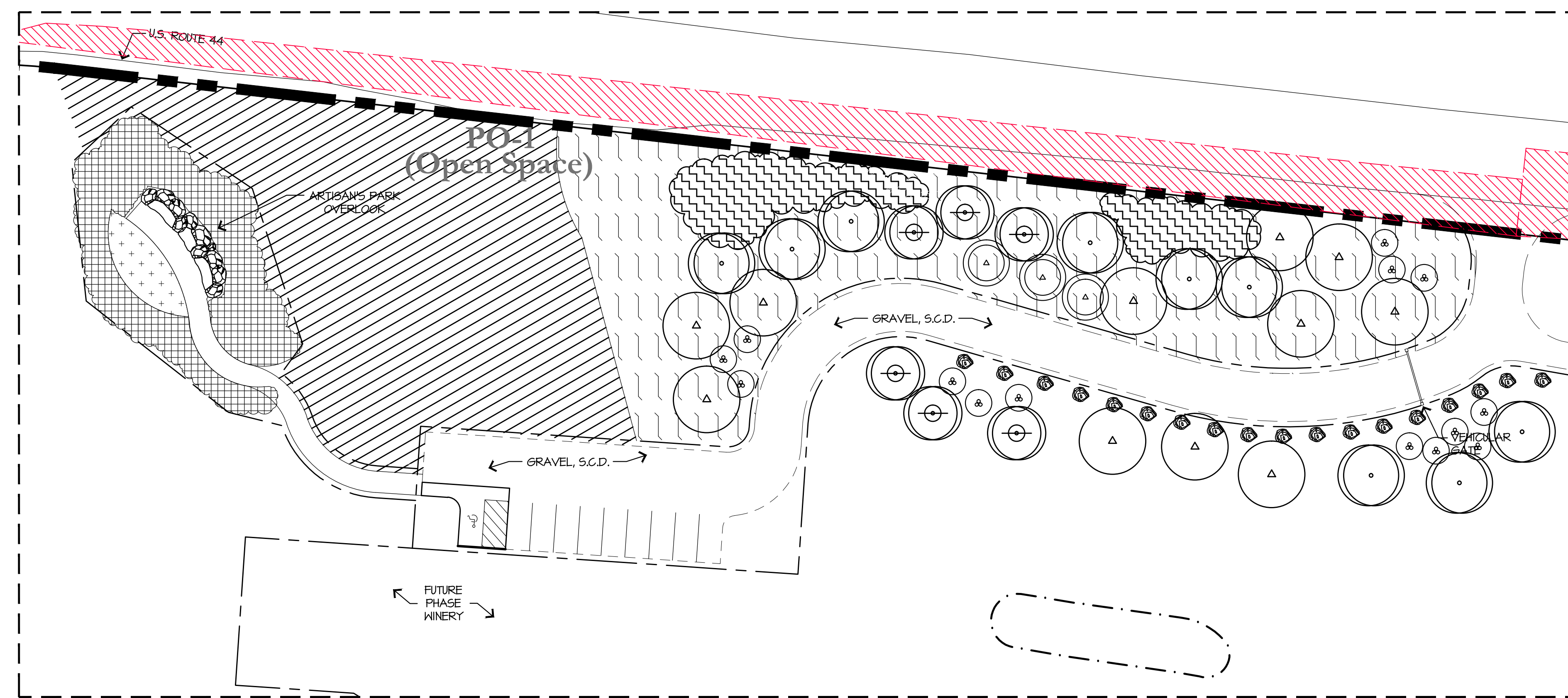


- GENERAL NOTES:**
- ALL GOLF LANDSCAPE SHOWN FOR ILLUSTRATIVE PURPOSES ONLY. REFER TO CIVIL ENGINEER AND GOLF COURSE ARCHITECTS PLANS FOR LAYOUT AND DESIGN.
 - DRAWINGS ARE FOR DESIGN INTENT ONLY.
 - STRUCTURAL DESIGN OF ALL WALLS/ STAIRS AND OTHER HARDSCAPE ELEMENTS IS THE RESPONSIBILITY OF THE STRUCTURAL ENGINEER AND CIVIL ENGINEER.
 - COORDINATE WITH LIGHTING CONSULTANT PRIOR TO BEGINNING ANY WORK.
 - IRRIGATION PLANS SHALL BE PROVIDED BY CLIENT.
 - SEE CIVIL ENGINEER'S DRAWINGS FOR ROAD, PARKING, AND TRAFFIC DESIGN.
 - SEE TYPICAL RESIDENTIAL LOT ENLARGEMENT PLANS FOR PLANTING DESIGN INTENT WITHIN RESIDENTIAL DEVELOPMENT AREAS.

GRADING AND DRAINAGE DISCLAIMER:
GRADING AND DRAINAGE INFORMATION SHOWN IS FOR REFERENCE ONLY. SEE CIVIL DRAWING FOR COMPLETE DRAINAGE AND GRADING PLANS, WALL HEIGHTS, FINISH GRADES AND DRAIN LOCATIONS.



ARTISAN'S PARK OVERLOOK ENLARGEMENT



MAINTENANCE FACILITY ENLARGEMENT



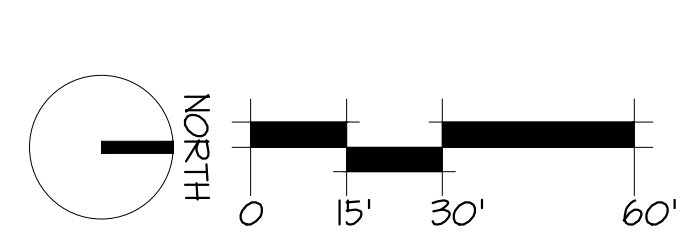
NOT FOR CONSTRUCTION
 SILO RIDGE
 PHASE 1 SITE PLAN SUBMISSION
 HART HOWERTON
 10 Erie Ave. Suite 200, Newburgh, NY 12550
 TEL: 845.488.5431 FAX: 845.488.1748
 Email: NY@hrtow.com
 Ardenia, New York
 Dutchess County
 PLANTING PLAN
 ENLARGEMENT
 PROJECT #: 13-507
 DRAWN BY: VALUE
 CHECKED BY: VALUE
 DRAWING NO.: L3.14

DATE ISSUE

03/09/2014	PH 1 SITE PLAN
04/22/2014	SITE PLAN REV
07/19/2014	SITE PLAN REV
01/08/2015	SITE PLAN REV

REVISIONS

NO.	DATE	ISSUE
01/09/2015	REVISION #1	



Jonathan Sotter, EIT 2012-12-207, Ardenia Inn and Cottages LLC CAD (Shedfiles) Sheet SCL1.23 (Landscape Planning) - Page Setup: user: JHart, Plot Scale: 1:1, \\HP\PRINT\Cadwin R2200-3000 PCL24

DECIDUOUS AND EVERGREEN TREES

NO. OF PLANTS	BOTANICAL NAME	COMMON NAME	SPEC. SIZE	NOTES
34	ABIES BALSAMEA	BALSAM FIR	10'-12' HT.	
87	ABIES CONCOLOR	CONCOLOR FIR	10'-12' HT.	
34	ACER RUBRUM 'BOYHALL'	BOYHALL RED MAPLE	3' CAL.	
354	ACER RUBRUM	RED MAPLE	3' CAL.	
175	ACER SACCHARUM	SUGAR MAPLE	3' CAL.	USE A BLEND OF THE FOLLOWING: ACER X FREEMANII 'AUTUMN BLAZE' (USE IN LOCATIONS CLOSEST TO ROAD DUE TO SALT TOLERANCE), ACER RUBRUM 'OCTOBER GLORY', AND ACER RUBRUM (STRAIGHT SPECIES)
14	ACER SACCHARUM SPECIMEN	SUGAR MAPLE	8' CAL.	USE MIX OF 'GREEN MOUNTAIN', 'LEGACY' AND 'BONFIRE'
64	BETULA LENTA	BLACK BIRCH	3' CAL.	
65	BETULA NIGRA	RIVER BIRCH	3' CAL.	USE SOME 'HERITAGE' CULTIVARS IN FOCAL AREAS
40	BETULA POPULIFOLIA 'WHITESPIRE'	WHITESPIRE BIRCH	2' CAL.	CLUMP FORM
21	CARYA GORDIFORMIS	BITTERNUT HICKORY	3' CAL.	
36	CARYA OVATA	SHAGBARK HICKORY	3' CAL.	
5	CERCIDIPHYLLUM JAPONICUM	KATSURA TREE	3' CAL.	
10	GLEDITSIA TRIACANTHOS 'MORAINE'	MORAINE HONEY LOCUST	6' CAL.	
42	FRAXINUS PENNSYLVANICA 'PATMORE'	GREEN ASH	3' CAL.	
34	LARIX LARCINA	AMERICAN LARCH	3' CAL.	
15	LIRIODENDRON TULIPIFERA	TULIP TREE	2' CAL.	
43	LIQUIDAMBAR STYRACIFLUA 'MORAINE'	SWEETGUM	3' CAL.	
152	PICEA SYLVATICA	BLACK TIPELO	2' CAL.	MIX OF MULTI-TRUNK AND STANDARD TRUNK FORMS
13	OXYDENDRUM ARBOREUM	SOURWOOD	2' CAL.	
171	PICEA GLAUCA	WHITE SPRUCE	10'-12' HT.	
140	PRUNUS STROBUS	EASTERN WHITE PINE	10'-12' HT.	
82	QUERCUS ALBA	WHITE OAK	3' CAL.	
107	QUERCUS BICOLOR	SWAMP WHITE OAK	3' CAL.	
150	QUERCUS COCCINEA	SCARLET OAK	3' CAL.	
10	QUERCUS MACROCARPA	BUR OAK	3' CAL.	
60	QUERCUS PALUSTRIS	PIN OAK	3' CAL.	
125	QUERCUS RUBRA 'MAXIMA'	RED OAK	3' CAL.	
23	SALIX NIGRA	BLACK WILLOW	2' CAL.	
81	SASSAFRAS ALBIDUM	SASSAFRAS	2' CAL.	
6	TILIA AMERICANA 'REDMOND'	REDMOND BASSWOOD	3' CAL.	
24	THUJA OCCIDENTALIS	EASTERN WHITE CEDAR	7'-9' HT.	
35	PICEA GLAUCA 'DENSATA'	BLACK HILLS SPRUCE	7'-9' HT.	

ORNAMENTAL TREES

NO. OF PLANTS	BOTANICAL NAME	COMMON NAME	SPEC. SIZE	NOTES
81	AMELANCHIER ARBOREA 'AUTUMN BRILLIANCE'	DOWNY SERVICEBERRY	1/2' CAL.	
101	AMELANCHIER CANADENSIS	SERVICEBERRY	1/2' CAL.	CLUMP FORM
31	CERCIS CANADENSIS 'ALBA'	WHITE BLOOMING EASTERN REDBUD	1/2' CAL.	
57	CHAEMAEQYPARIS THYOIDES	ATLANTIC WHITE CYPRESS	1/2' CAL.	
25	CORNUS KOUSA	KOUSA DOGWOOD	1/2' CAL.	
43	HAMAMELIS VIRGINIANA	COMMON WITCH HAZEL	1/2' CAL.	
8	PRUNUS SERRULATA 'KWANZAN'	KWANZAN FLOWERING CHERRY	1/2' CAL.	MATCHING SPECIMENS

GOLF COURSE ZONES

HABITAT CLASSIFICATION	REMARKS
GOLF COURSE - IN PLAY	SEE HMP FOR PLANTING INFORMATION
NATIVE FESCUE 6' TO 1'-0" HT.	SEE HMP FOR PLANTING INFORMATION
P1 - SHORELINE GROUP	SEE OPEN SPACE PLANT SCHEDULE FOR PLANTING INFORMATION
P2 - NATIVE SHORT GRASS 1'-0"	SEE HMP FOR PLANTING INFORMATION
P3 - NATIVE TALL GRASS > 1'-0"	SEE HMP FOR PLANTING INFORMATION
GT - GOLF TRANSITION GRASSES	SEE HMP FOR PLANTING INFORMATION
FOREST HABITAT	EXISTING AND PROPOSED FOREST AREAS. PROPOSED AREAS DEPICTED AS TREE SYMBOLS - SEE PLANTING PLAN AND SCHEDULE
AQUATIC HABITAT	NOTE: ONLY PO (ZERO) ZONES ARE SHOWN IN LANDSCAPE PLANS

NOTE: GOLF DESIGN AND LAYOUT PER GOLF COURSE ARCHITECT. SEE HABITAT MANAGEMENT PLAN (HMP) FOR GOLF PLANTING INFORMATION AND LAYOUT. SHOWN HERE FOR ILLUSTRATIVE PURPOSES ONLY.

NOTE: PLANTING QUANTITIES ARE FOR REFERENCE ONLY. IT IS THE RESPONSIBILITY OF THE CONTRACTOR TO VERIFY ALL PLANT QUANTITIES FROM SYMBOLS/HATCHES SHOWN ON PLANTING PLANS. ANY SUBSTITUTIONS/ADDITIONS/SUBTRACTIONS OF PLANT MATERIAL IS TO BE APPROVED BY THE LANDSCAPE ARCHITECT IN WRITING ONLY. VERBAL SUBSTITUTIONS/ADDITIONS/SUBTRACTIONS ARE NOT ACCEPTABLE.

ABBREVIATIONS:
CAL. = CALIPER
GAL. = GALLON

AMENITY AREAS - PLANT MIXES

MIX NAME	TOTAL SQ. FT.	BOTANICAL NAME	COMMON NAME	SPEC. SIZE	SPACING	NOTES
CELL A: LAWN SEED MIX	134,874	40% FESTUCA ARUNDINACEA 'SHENANDOACH II' 40% FESTUCA ARUNDINACEA 'FINELAWN ELITE' 10% LOLIUM PERENNE 'WIZARD' 10% LOLIUM PERENNE 'PENNANT II'	SHENANDOAH II TALL FESCUE FINELAWN TALL FESCUE WIZARD PERENNIAL RYEGRASS PENNANT II PERENNIAL RYEGRASS			
CELL B: GARDEN BORDER	12,727	10% BUXUS 'GREEN GEM' 10% MISCANTHUS 'LITTLE GEM' 20% ROSE 'THE FAIRY' 20% GERANIUM 'ROZANNE' 20% PEROVSKIA SPP. 'RUSSIAN SAGE' 10% LEUCANTHEMUM SPP. 10% SAPONARIA OFFICINALIS 5% SEDUM SPIRIMUM	GREEN GEM BOXWOOD DWARF MAIDEN GRASS GROUNDCOVER ROSE GERANIUM RUSSIAN SAGE DWARF SHASTA DAISY SOAPWORT DRAGON'S BLOOD SEDUM	3 GAL 1 GAL 3 GAL 1 GAL 1 GAL 1 GAL 1 GAL 3.5' POTS	18' 18' 2' 2' 18' 18' 18' 12'	MAINTAIN BOXWOOD AS 18" HT. CLIPPED HEDGE AT BORDER
CELL B2: SWIM CLUB	3,002	30% RHUS AROMATIC 'GRO-LOW' 30% CLETHRA ALNIFOLIA 'HUMMINGBIRD' 30% CORNUS SERICEA 'FLAVIRAMEA' 10% CORNUS SERICEA 'CARDINAL'	GRO-LOW SUMAC HUMMINGBIRD SUMMERSHEET RED-OSIER DOGWOOD RED-OSIER DOGWOOD	1 GAL 5 GAL 5 GAL 5 GAL	6' 6' 6' 6'	
CELL C: NATIVE GRASS/WILDFLOWER NATURAL MEADOW SLOPE SEED MIX	44,676	20% LOLIUM MULTIFLORUM 20% ANDROPOGON SCOPARIUS 20% ELYMUS CANADENSIS 10% SPODOBOLUS ASPER 10% BRONXUS CILIATUS 10% AGROSTIS PERENNANS 5% RUDBECKIA HIRTA 5% ASTER FRENANTHOIDES 2% SOLIDAGO NEMORALIS	ANNUAL RYEGRASS LITTLE BLUESTEM CANADA WILD RYE ROUGH DROPSEED FRINGED BROME AUTUMN BLUDEGRASS BLACK EYED SUSAN ZIGZAG ASTER GRAY GOLDENROD			
CELL D: CONDO GARDEN ZONE - PERIMETER AND BETWEEN BUILDINGS	33,134	20% NATIVE FERNS 10% HAMELIS VIRGINIANA 15% AMELANCHIER LAEVIS 15% AESCULUS PARVIFOLIA 15% ILEX VERTICILLATA 'WINTER RED' 15% RHODODENDRON MAXIMUM 'INDEPENDENCE' 20% ARCTOSTAPHYLOS UVA-URSI 'MASSACHUSETTS'	NATIVE FERNS WITCHHAZEL SERVICEBERRY BOTTLEBRUSH BUCKEYE WINTER RED WINTERBERRY HOLLY ROSEBAY RHODODENDRON MASSACHUSETTS' KINNICKINICK	3' 4' 4' 3' 4' 4' 1 GAL	5' T T 5' 5' 5' 2'	MIX VARIETIES IN GROUPS OF 3, 5, 7; USE RHODODENDRON MAXIMUM IN 'SHELTERED SHADE CONDITIONS'
CELL E: CONDO GARDEN ZONES - SOUTH AND WEST EXPOSURES	22,641	20% ARCTOSTAPHYLOS UVA-URSI 20% VIBURNUM TRILOBUM 'COMPACTUM' 20% SPIRAEA X BIMALDA 'DARTS RED' 10% CLETHRA ALNIFOLIA 'HUMMINGBIRD' 10% CORNUS ALBA 'RED GNOME' 10% ILEX GLABRA 'SHAMROCK' 10% MYRTICA PENNSYLVANICA	KINNICKINICK HIGH BUSH CRANBERRY DARTS RED SPIRAEA SWEET PEPPERBUSH RED GNOME' TATARIAN DOGWOOD INKBERRY NORTHERN BAYBERRY	6" POT 3 GAL 3 GAL 3 GAL 3 GAL 5 GAL 5 GAL	2' 4' 4' 4' 4' 4' 5'	USE INKBEERY AS FOUNDATION PLANTING AT CONDOS; USE MYRTICA PENNSYLVANICA AT BASE OF SLOPE
CELL E2: CONDO GARDEN ZONES AND GOLF ACADEMY - NORTH AND EAST EXPOSURES	7,034	20% PACHYSANDRA TERMINALIS 20% KALMIA LATIFOLIA 'OLYMPIC FIRE' 15% RHODODENDRON MAXIMUM 'INDEPENDENCE' 15% HYDRANGEA QUERCIFOLIA 'FEE WEE' 15% RHODODENDRON P.M. 10% ILEX GLABRA 'SHAMROCK'	PACHYSANDRA OLYMPIC FIRE MOUNTAIN LAUREL DWARF LEUCOTHOE DWARF OAKLEAF HYDRANGEA P.M. RHODODENDRON INKBERRY	6" POT 3 GAL 3 GAL 3 GAL 3 GAL 3 GAL 5 GAL	2' 3' 3' 4' 4' 4' 4'	USE INKBEERY AND RHODODENDRON AS FOUNDATION PLANTING AT CONDOS; USE KALMIA IN PROTECTED PART SHADE LOCATIONS.
CELL F: GROUNDPLANE AT VILLAGE GREEN	41,345	RHUS GRO-LOW NATIVE FERNS MERTENSIA VIRGINICA BULBS	GRO-LOW SUMAC NATIVE FERNS BLUEBELLS BULBS	1 GAL 1 GAL LINERS BULB	6' AS REQ. BULB	INTERMITTENT SWATHS OF BULBS ALONG INNER-OVAL TREELINE, MASSINGS OF BLUEBELLS IN OPEN AREAS ALONG PATHS THAT RADIATE FROM OVAL; FERNS AND SUMAC AS GROUNDCOVER THAT WILL FILL IN OVER TIME.
CELL G: PARKING SCREEN SHRUBS	11,352	15% PICEA GLAUCA 'CONICA' 40% VIBURNUM DENTATUM 'CHRISTOM' 30% ILEX VERTICILLATA 'AFTERSLOW' 15% KALMIA LATIFOLIA 'OLYMPIC FIRE'	DWARF WHITE SPRUCE BLUE MUFFIN VIBURNUM WINTERBERRY MOUNTAIN LAUREL	1 GAL 5 GAL 5 GAL 5 GAL	5' 4' 8' 4'	USE NATURAL (NOT CLIPPED) FORM FOR PICEA GLAUCA 'CONICA'; NOTE: MIX VARIETIES IN GROUPS OF 1-4 PLANTS; USE KALMIA IN PROTECTED PART SHADE LOCATIONS.
CELL H: FRONT OF CLUBHOUSE AT FOUNDATION	3,345	10% CORNUS KOUSA DWARF CULTIVAR 20% KALMIA LATIFOLIA 'SNOWDRIFT' 20% HYDRANGEA QUERCIFOLIA 'FEE WEE' 20% OSMUNDA REGALIS 20% SPIRAEA 'ANTHONY WATERER' 10% LIRIOPE SPICATA	DWARF KOUSA DOGWOOD SNOWDRIFT MOUNTAIN LAUREL 'FEE WEE' HYDRANGEA AMERICAN ROYAL FERN 'ANTHONY WATERER' SPIRAEA LILYTURF	5 GAL 1 GAL 1 GAL 1 GAL 1 GAL 1 GAL	5' 3' 3' 3' 4' 16'	USE KALMIA IN PROTECTED PART SHADE LOCATIONS.
CELL I: GOLF TRANSITION	45,365	45% MYRTICA PENNSYLVANICA 10% RHUS TYPHINA 'BALLTIGER' 25% RHUS AROMATICA GRO-LOW 10% RHODODENDRON MAXIMUM 10% VIBURNUM DENTATUM 'MOONCLOW' OR SIM.	NORTHERN BAYBERRY TIGER EYES' SUMAC FRAGRANT SUMAC GREAT LAUREL ARROWWOOD VIBURNUM	5 GAL 5 GAL 1 GAL 1 GAL 5 GAL	5' 8' 6' 10' 8'	LARGE MASSINGS OF BAYBERRY WITH ACCENT GROUPINGS OF SUMAC AND VIBURNUM IN 3, 5, OR 7 PLANTS
CELL J: CONDO AUTOCOURT PLANTING	3,205	RHUS GRO-LOW NATIVE FERNS	GRO-LOW SUMAC NATIVE FERNS	1 GAL 1 GAL	6' AS REQ.	
CELL K: GOLF ACADEMY SLOPE SHRUB MIX	11,683	AESCULUS PARVIFLORA CLETHRA ALNIFOLIA 'RUBY SPICE' MYRTICA PENNSYLVANICA RHUS AROMATICA GRO-LOW VIBURNUM TRILOBUM 'COMPACTUM' SPRING BULBS	BOTTLEBRUSH BUCKEYE SWEET PEPPERBUSH RUBY SPICE NORTHERN BAYBERRY GRO-LOW SUMAC HIGHBUSH CRANBERRY WHITE AND PURPLE BULBS	5 GAL 3 GAL 5 GAL 1 GAL 3 GAL BULB	8' 4' 5' 6' 3' AS REQ.	USE MID-SLOPE TO BOTTOM OF SLOPE USE MID-SLOPE TO TOP OF SLOPE USE LARGE SWATHS THROUGHOUT AS GROUNDCOVER USE NEAR TOP AND BOTTOM OF SLOPE
CELL M: HEDGE AT PRACTICE TEES	3,187	40% ILEX GLABRA 'SHAMROCK' 60% VIBURNUM TRILOBUM 'COMPACTUM'	SHAMROCK INKBEERRY HIGHBUSH CRANBERRY	5 GAL 5 GAL	4' 3'	
CELL N: STREAM RESTORATION MIX	22,758	CLETHRA ALNIFOLIA ILEX VERTICILLATA NATIVE FERN OSMUNDA REGALIS SPIRAEA LATIFOLIA VIBURNUM TRILOBUM	SWEET PEPPERBUSH WINTERBERRY NATIVE FERN ROYAL FERN MEADOWSHEET CRANBERRYBUSH VIBURNUM	3 GAL 5 GAL 1 GAL 1 GAL 3 GAL 3 GAL	4' 8' AS REQ. 3' 3' 3'	

NOT FOR CONSTRUCTION
 HART HOWERTON
 100 Erie Ave., Suite 200, New York, NY 10016
 Tel: 212.683.5431 Fax: 212.481.1748
 Email: NY@hhowerton.com
 SILO RIDGE
 PHASE 1 SITE PLAN SUBMISSION
 Amenia, New York
 Dutchess County
 DATE ISSUED
 03/09/2014
 04/22/2014 SITE PLAN REV
 06/19/2014 SITE PLAN REV
 01/08/2015 SITE PLAN REV
 REVISIONS
 NO. DATE ISSUE
 12/09/2015 REVISION #1
 PROJECT #:
 13-507
 DRAWN BY:
 12
 CHECKED BY:
 SEB
 DRAWING NO.:
 L3.21

